

CIM - LINE

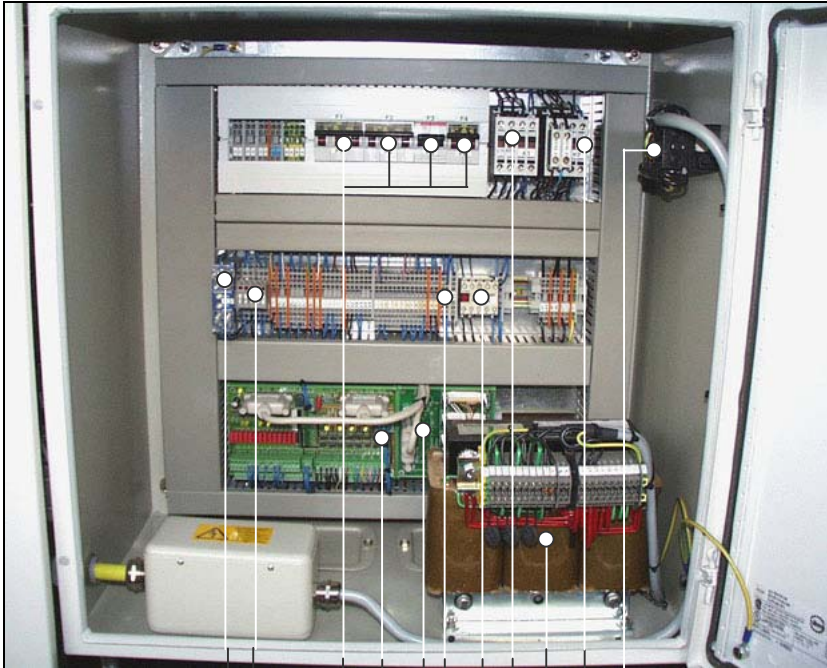
FACTORY 2000

Electrical Parts



CIM - LINE

FACTORY 2000



**Components
Switch Cabinet**

No.	ELCEDE-No.	Description
1	601.3042	Main Switch
2	608.0028	Contactor K2
3	606.1030	Tranformer Tr 1
4	608.0028	Contactor K1
5	608.0001	Relay K8
6	604.1093	LED Connector
7	899.1446	Connector INC Board
8	899.1442	Digi I/O + Connector board
9	see fuse page	Main Fuses F1, F2,F3,F4

11	see fuse page	Fuse F10 – F15
12	608.3005	Relay K3

CIM - LINE

FACTORY 2000



**Fuses
Switch Cabinet**

No.	ELCEDE-No.	Discription
F1	600.0722	Main Fuse F1=D6
F2	600.0723	Main Fuses F2=D10
F3	600.0613	Main Fuses F3=K6A
F4	600.0722	Main Fuses F4=D6

F10	600.0209	Fuse F10=200mA/T
F11	600.0221	Fuse F11=3,15 A/T
F12	600.0219	Fuse 12=2 A/T
F14	600.0219	Fuse F14=2 A/T
F15	600.0218	Fuse F15=1,6 A/T

CIM - LINE

FACTORY 2000

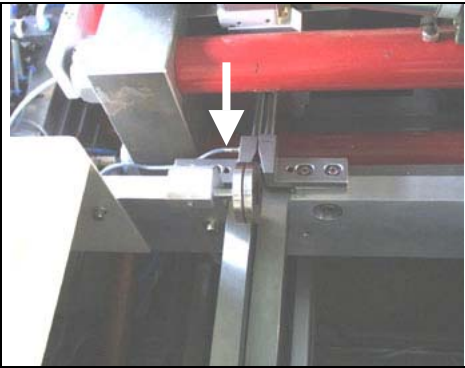


Amplifier Rack

No.:	ELCEDE-No	Discription
1	860.2012	Power Supply T1
2	899.1471	Indication V.C. Board
3	810.0020	Brake Relay
4	860.1030	Amplifier C-Axis
5	860.1030	Amplifier X-Axis

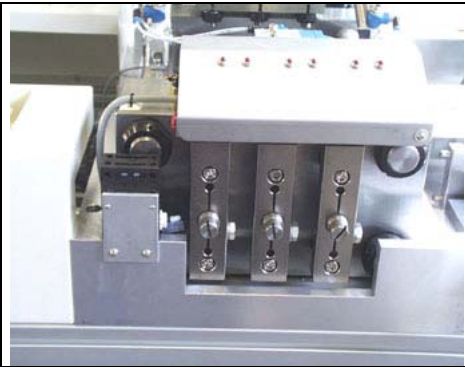
CIM - LINE

FACTORY 2000



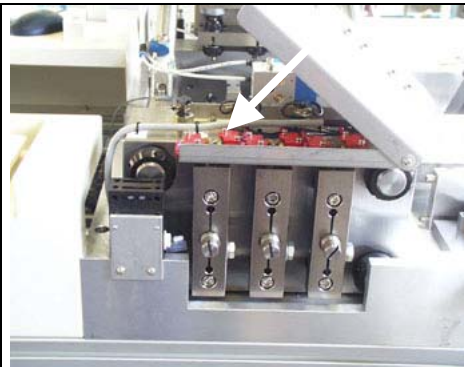
Sensor

ELCEDE – No.: 670.0002



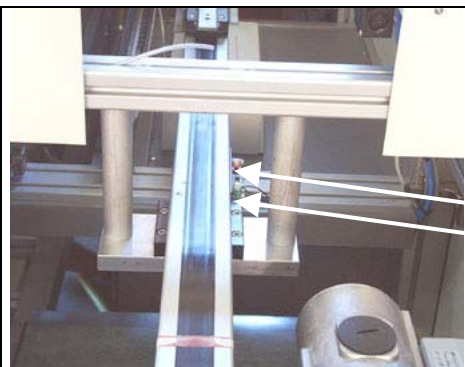
Indication Diodes

ELCEDE – No.: 642.1102



Tool starting and turning point switches

ELCEDE – No.: 601.2003



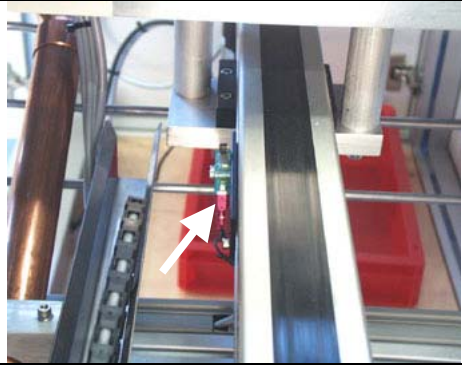
Reference and limit / emergency switch

ELCEDE – No.: 601.2003 reference switch

ELCEDE – No.: 601.2009 limit/emergency switch

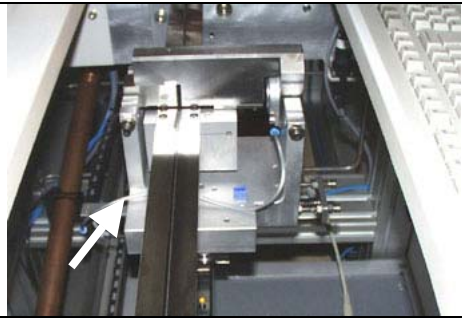
CIM - LINE

FACTORY 2000



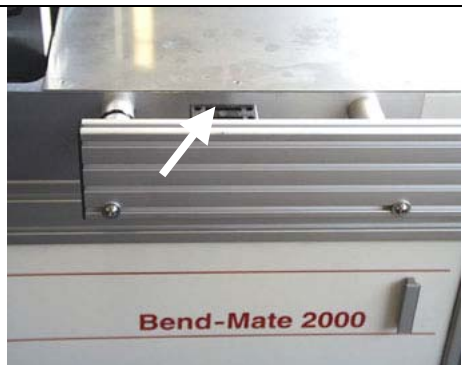
Limit / Emergency switch

ELCEDE – No.: 601.2009



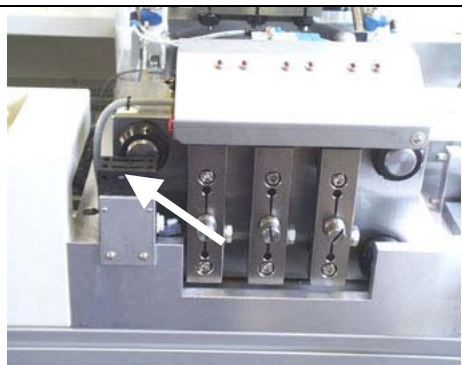
Limit / Emergency switch

ELCEDE – No.: 601.2003



Safety switch for bending cover

ELCEDE – No.: 601.4002



Safety switch for tool cover

ELCEDE – No.: 601.4002